



SKYBOX

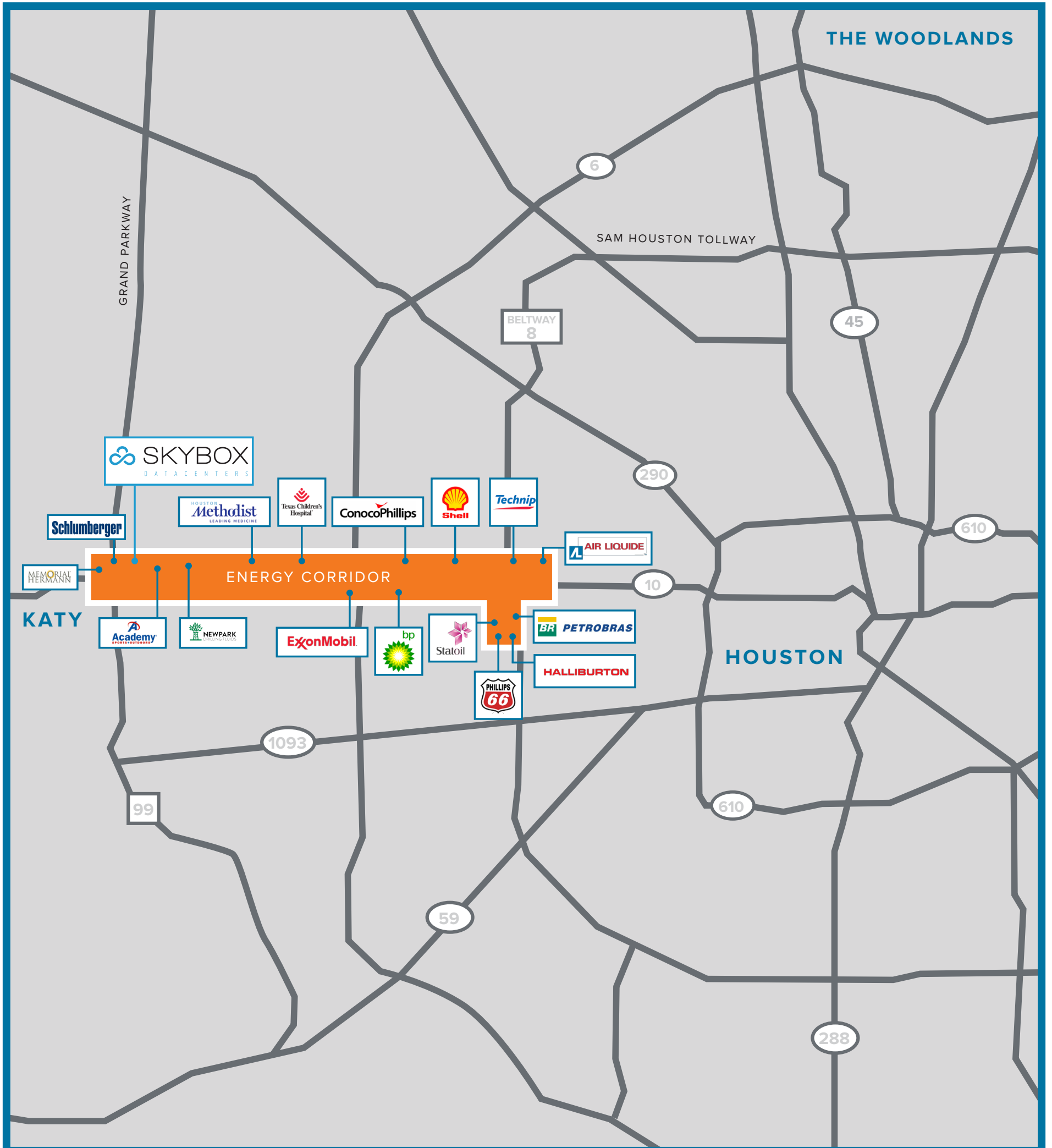
D A T A C E N T E R S

---

HOUSTON ONE

# LOCATION

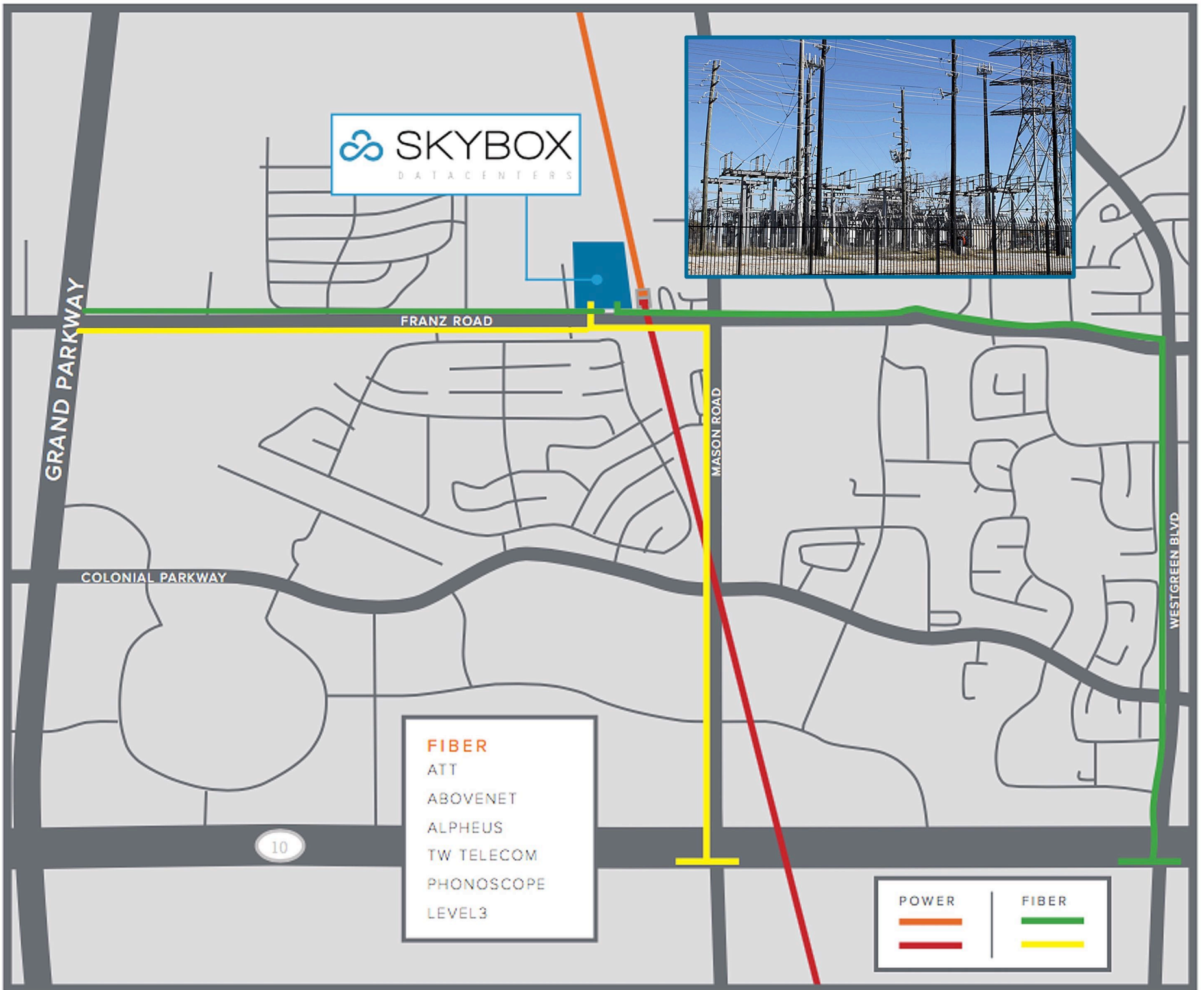
Skybox Houston One is located in the prestigious Energy Corridor just west of Houston, TX. Located along Interstate Highway 10 and east of the newly opened Grand Parkway, Skybox Houston One is quick and easy to access from the primary business centers in Houston.





### POWER

Skybox Houston One is fed by one of the most robust substations in the CenterPoint delivery area. This is a loop-fed substation served by 138 kVA power transmission from the north and south. Three 100 MVA transformers supply a total of 300 MVA of power, which is both secure and reliable due to its location directly adjacent to the data center.



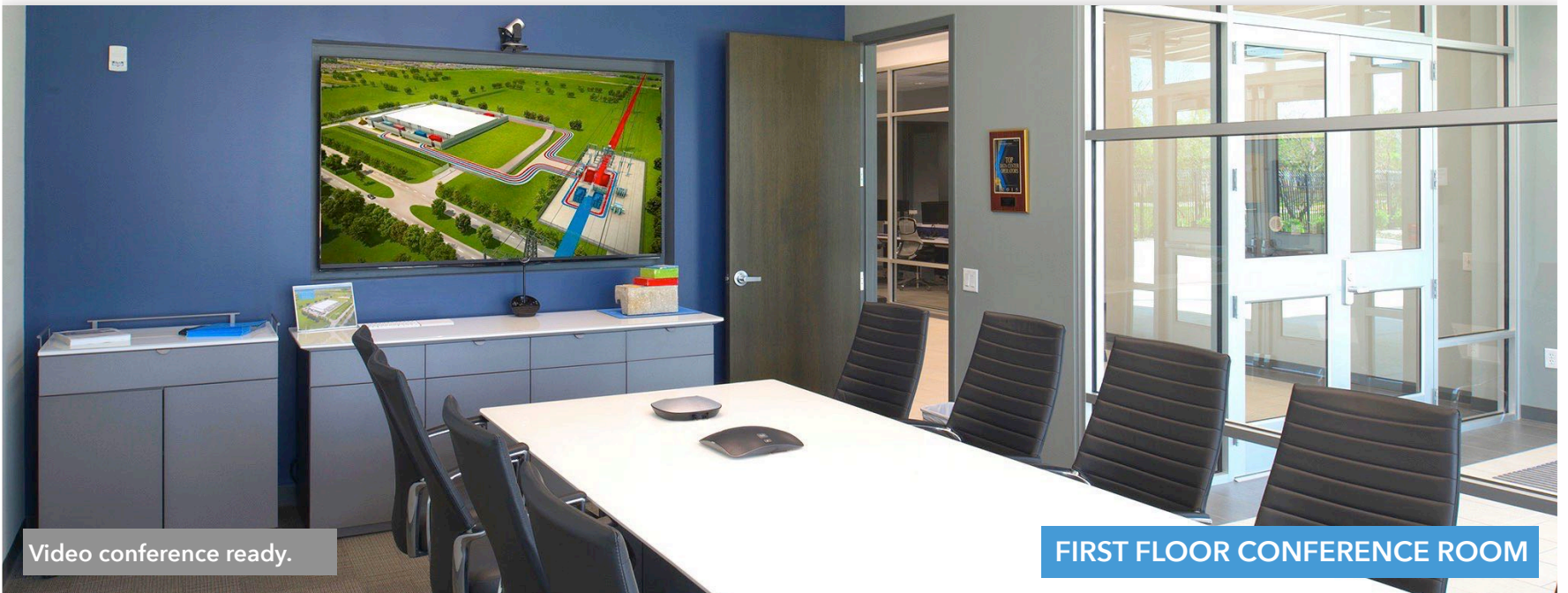
### FIBER

Fiber to the site is delivered to redundant A/B telecommunication rooms from multiple providers with ultra low latency



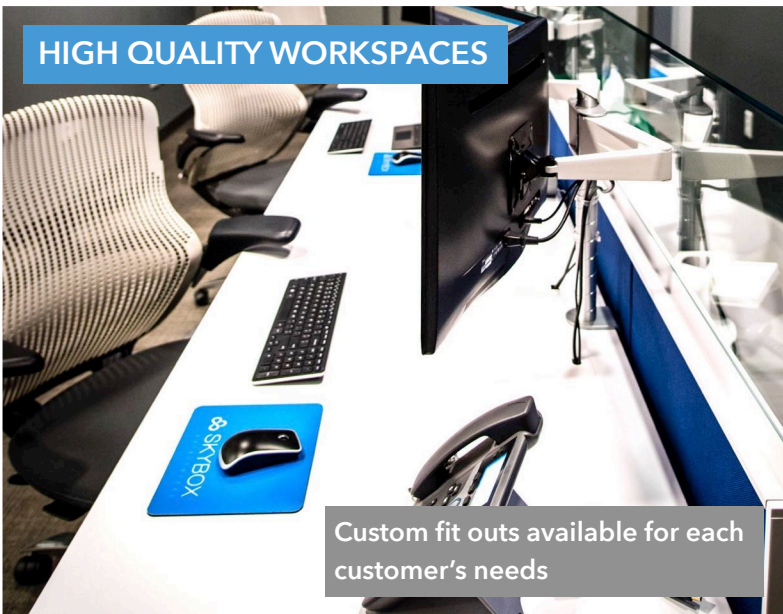
# Skybox Houston Offers Dynamic Office & Shared Spaces

CONFERENCE ROOMS & CLIENT LOUNGE AVAILABLE FOR ALL SKYBOX CUSTOMERS.



Video conference ready.

FIRST FLOOR CONFERENCE ROOM



HIGH QUALITY WORKSPACES

Custom fit outs available for each customer's needs



MEN'S & WOMEN'S SHOWERS

Essential for extended operations due to inclement weather



DEDICATED STORAGE

84 SF CAGES

OR

204 SF ROOM



SECOND FLOOR CUSTOMER LOUNGE & KITCHEN

Snacks, drinks & wifi available 24x7



## CenterPoint Premium Rollover Service

CENTERPOINT PREMIUM ROLLOVER SERVICE DELIVERS TRUE SUBSTATION LEVEL REDUNDANCY.

### Excellence in Design & Operation

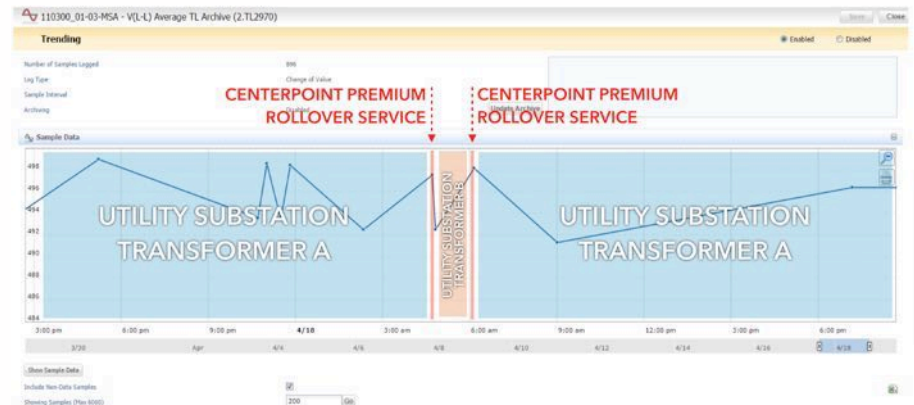
Skybox's CenterPoint Premium Rollover Service (PRS) provides for two circuits, a Primary and Secondary, with a predetermined amount of reserve capacity per our PRS Agreement, and the critical equipment to facilitate rollover to a Secondary Circuit within +/- 10 seconds when a loss of service is detected on the Primary Circuit. The dedicated integrated switching devices (IGSD) complete the rollover in as little as 10 cycles after the process is automatically initiated.

In most instances, our Premium Rollover Service has occurred in less than 1 second. All testing and operation of the IGSDs are managed by CenterPoint with oversight by Skybox. PRS is exclusive to Skybox DH1 & DH3 at the Skybox Houston Campus and contractually inclusive to your data center agreement, ensuring the highest levels of redundancy to your mission critical data center.

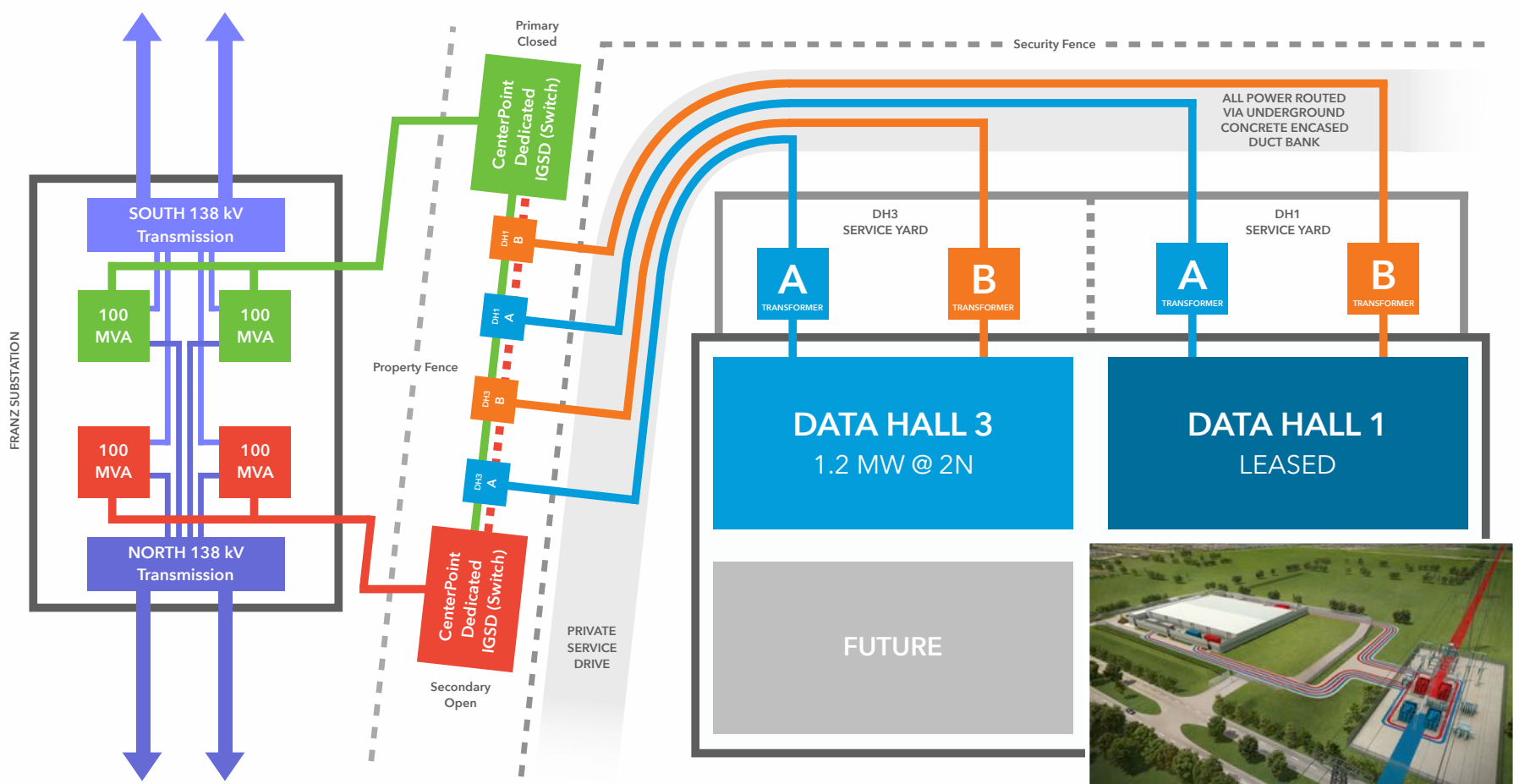


### Proven Performance During Hazardous Events

On April 18th, 2016 Houston experienced one of the worst single day rain events in history. In addition to performing exceptionally well above its peers in terms of site access and flooding avoidance, Skybox Houston was one of the only data centers in Houston that did not have to go to generator due to continuously available and reliable utility service.



As you can see from the Data Hall 3 summary report above, CenterPoint PRS enabled a transition from Primary to Secondary, remained for over an hour and then transitioned back to Primary, all in less than 10 cycles per transition. Skybox DH3 experienced no critical power interruptions nor the need for backup generation at any point during this record breaking event. This is a great example of where PRS truly shines during hazardous weather events.





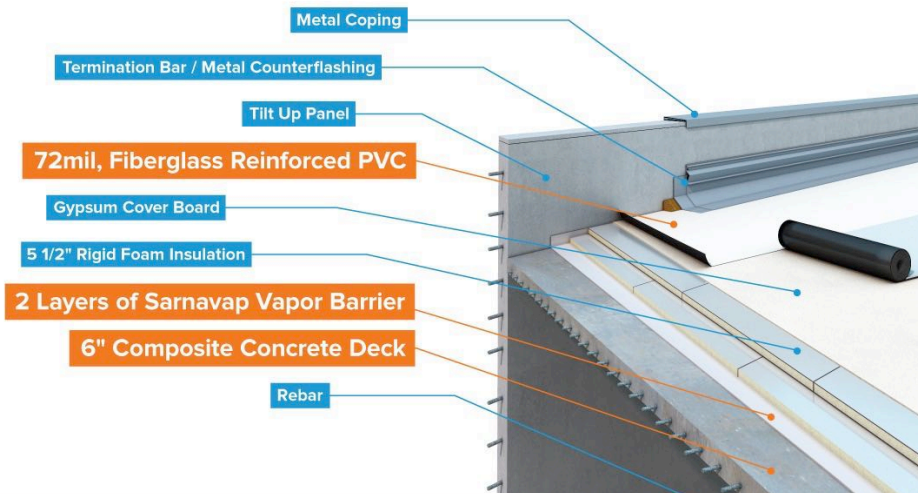
Skybox Houston is purpose built with Disaster Recovery in Mind

Fortune 200 selected Skybox Houston as its Production Data Center provider for Houston HQ.

Skybox Houston One

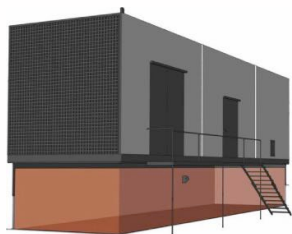
Roof & Building Envelope:  
Miami Dade Designed

**190+ MPH**  
Wind Resistance



**6" Concrete**  
Roof Deck

**Ballistics Rated**  
Exterior Windows



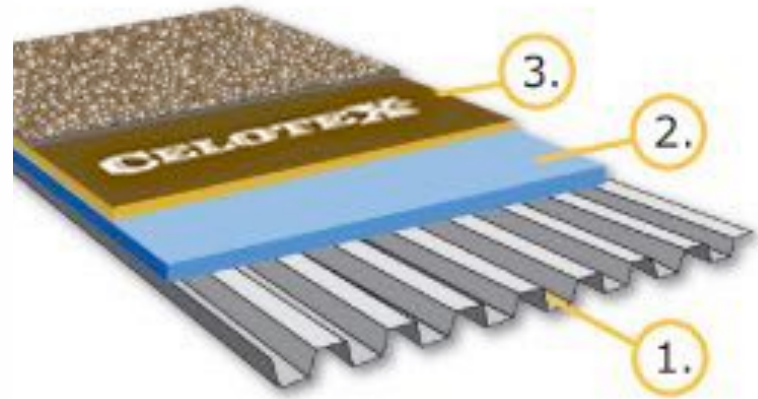
**96 Hours of Backup Fuel**  
Oversized 7,000 Gallon Belly Tanks

**On-Site Showers**  
Both Men's & Women's

Typical Houston Colo

Roof & Building Envelope:  
Code Minimum

**103 MPH**  
Wind Resistance



**Metal**  
Roof Deck

**Code Minimum**  
Exterior Windows

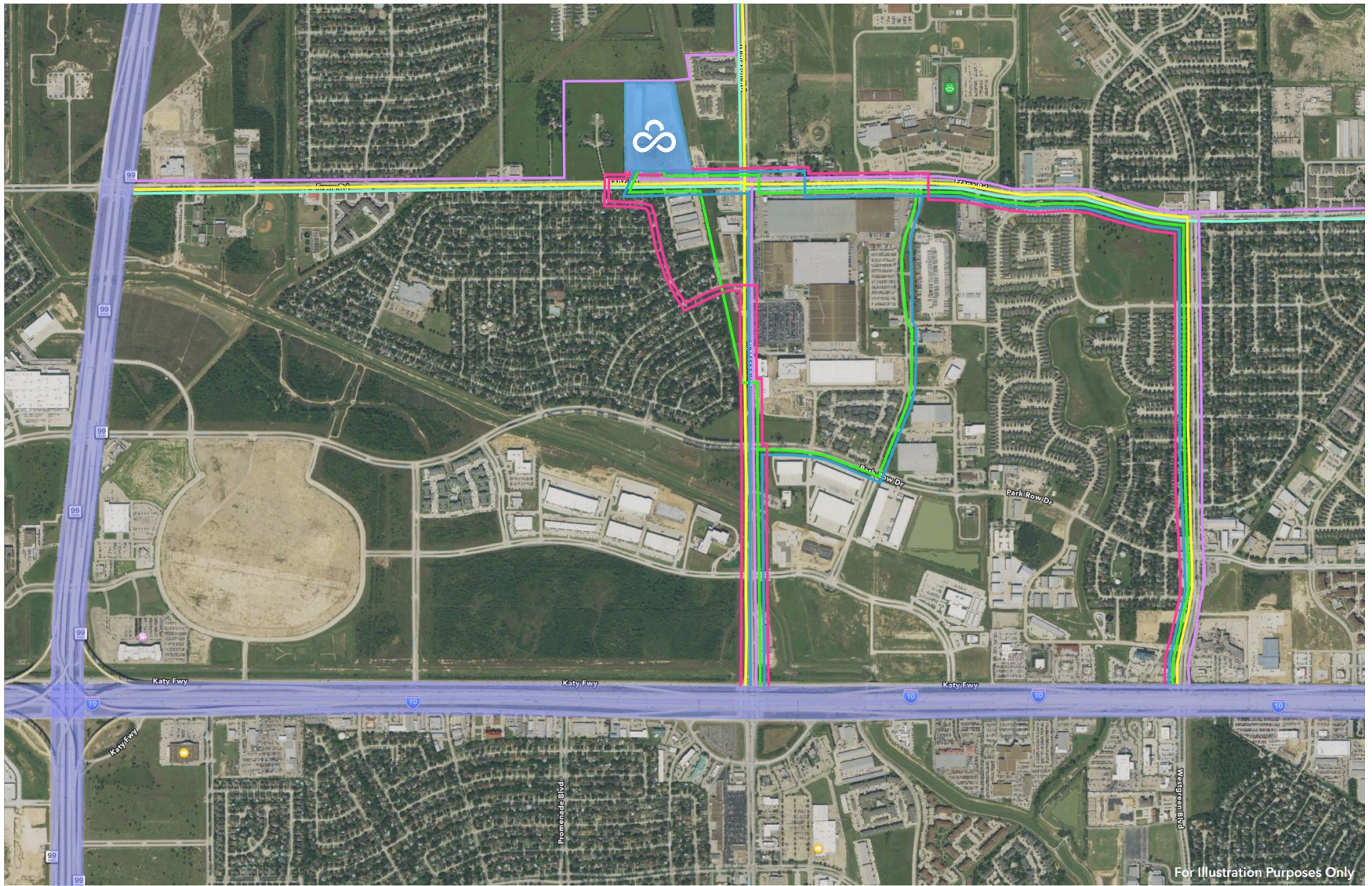
**36-48 Hours**  
of Backup Fuel

**BYOD**  
Bring your own deodorant.



# Skybox Houston Campus Fiber Providers

EXCELLENT OPTIONS FOR BOTH LIT & DARK FIBER SERVICES TO THE WOODLANDS, DOWNTOWN & BELTWAY 8.



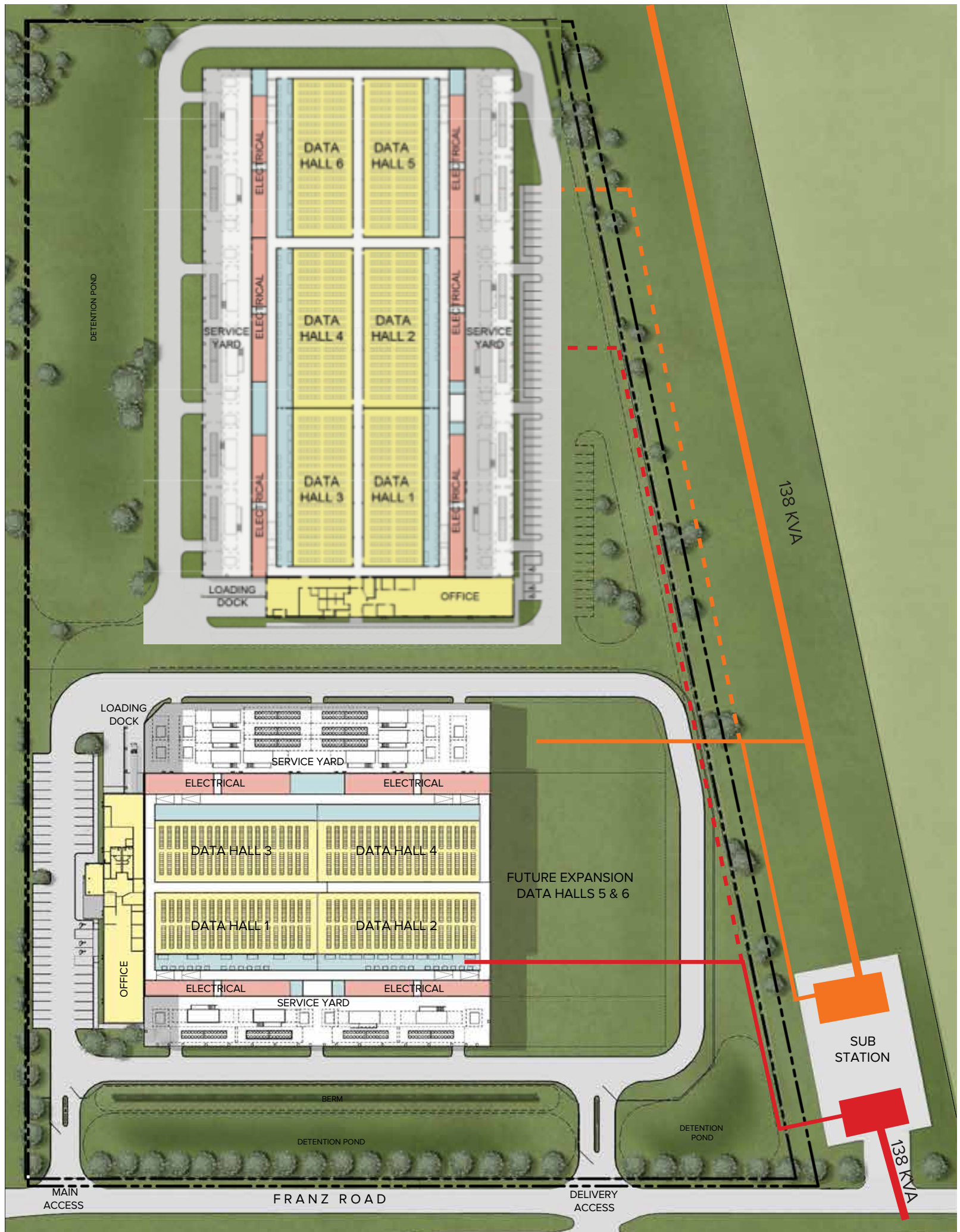
■ AT&T LEC (CenturyLink & Verizon)
 ■ Alpheus
 ■ Cogent
 ■ Level3
 ■ Phonoscope
 ■ Zayo
 ■ Long-Haul



# CAMPUS

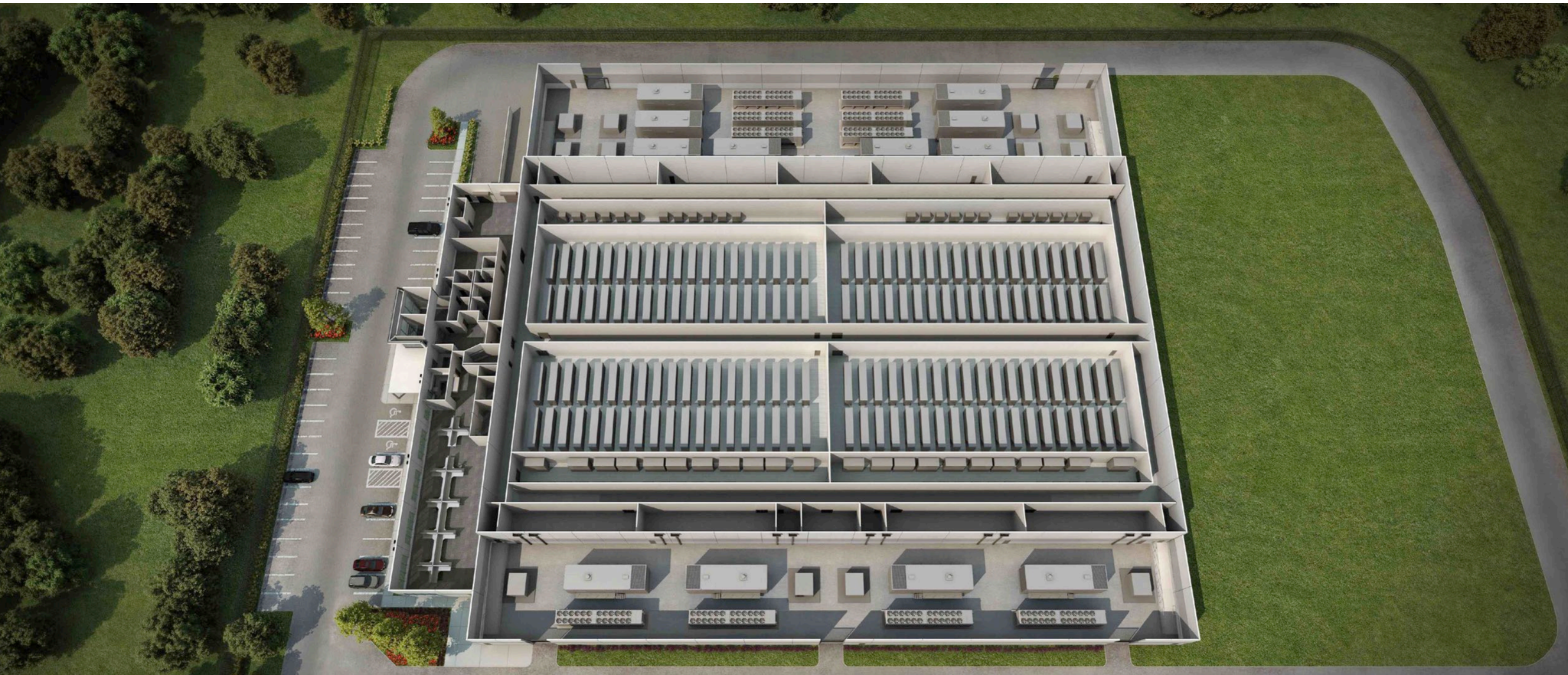
The Skybox Houston Campus provides users with a 20 acre campus for today's mission critical requirements and room for tomorrow's growth. The

Skybox Houston Campus is located outside of all 500 and 100 year floodplains providing maximum protection from natural hazards.





# SKYBOX DATACENTERS



## DESIGN FLEXIBILITY

Skybox Datacenters delivers best-in-class data center design that allows for fast deployment of new critical capacity while maintaining lower cost of operations. Each Skybox facility is crafted for its individual market and clients requirements.

- 96,129 sq. ft. shell building on secure 19.4 acre campus
- 8' Ameristar site perimeter security fencing
- Located in Houston's prestigious Energy Corridor
- 6" concrete roof deck; sustainable up to winds 190+ MPH
- Diverse 12.5-MW concrete encased duct banks to the site
- Onsite dedicated office space, storage and burn-in space
- 1,200 kW, 2N electrical and mechanical design per data hall, expandable to 2,400 kW utilizing proprietary Double Dense technology
- Diverse fiber routing on campus and within the facility (A/B Telco rooms)
- Outside of FEMA floodplains (100/500 Year)

CONTACT US

**CONTACT** GORDON KELLERMAN

**PHONE** 713.999.4400

**EMAIL** GORDON@SKYBOXDATACENTERS.COM